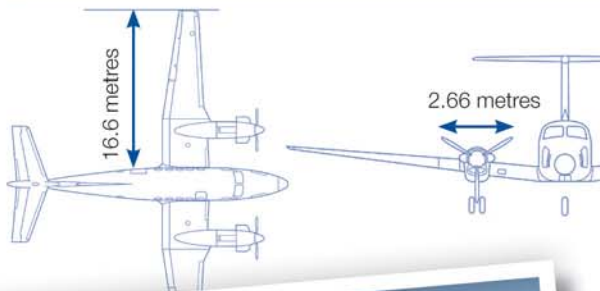
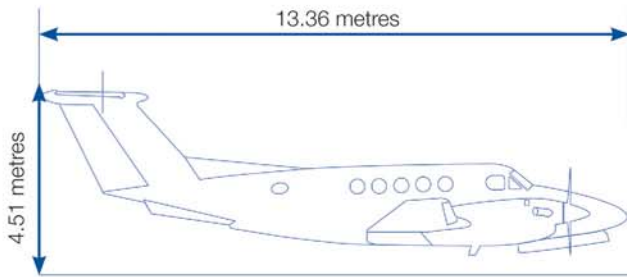


# CareFlight King Air B200 Fast Facts

The King Air B200 is an American built aircraft and is widely used for aeromedical work. Powered by two gas-turbine engines, it has four-bladed propellers, a pressurised cabin and retractable undercarriage. The King Air is an all weather, day/night capable aircraft.

CareFlight operates a fleet of King Air B200 aircraft. These aircraft have been extensively modified to undertake aeromedical missions.

The King Air B200 has wide cargo doors to allow for easy movement of patients into and out of the planes; electro-pneumatic loading systems for quicker, safer and smoother stretcher loading; special medical flooring; storage units; and oxygen systems. It also has purpose-designed radios and navigation systems for CareFlight's long flights to access patients in very remote locations. The cabin is configured to accommodate two stretcher patients, two seated patients and the aeromedical team.



## ENGINES:

2 x Pratt and Whitney PT6A - 42 gas turbines, delivering (850 SHP) each

## FUEL USAGE:

Fuel capacity 3600lbs 1630kg  
 Jet A-1 refined kerosene  
 Fuel burn 600 lbs/hr

## MEASUREMENTS:

Total length 13.36 metres  
 Total height 4.51 metres  
 Rotor diameter 2.66 metres  
 Max weight 5710kg

## EQUIPMENT:

- Weather radar
- GPS navigation system
- Dual autopilot
- Full Instrument Flight Rules (IFR) navigation suite: ILS, VOR, DME, NDB and RNAV
- VHF and HF aviation radios
- 3G mobile phone and Satellite phones

## MODIFICATIONS:

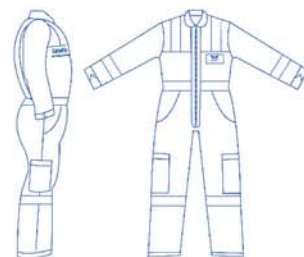
- Ram Air Recovery System
- Short field enhancement
- Dual aft body strakes
- Hartzell/Raisbeck quiet turbofan
- Propeller kit with auto feather
- Brake De-Ice System
- Freon air conditioning
- High flotation landing gear

## SPEED:

Max speed: 570 km/hr (308 knots)  
 Cruising speed: 485 km/hr (255 knots)  
 Max range: 1900 km (1100 NM)  
 Max altitude: 10,668 m (35,000 ft)  
 Endurance: 6 hrs

## CREW:

3 members:  
 Pilot  
 Nurse  
 Doctor





**CareFlight is an aeromedical charity. Our mission is to save lives, speed recovery and serve the community.**

CareFlight uses helicopters, aeroplanes, jets and road ambulances to bring a hospital level of care to patients.

Our critical care doctors and nurses are specially trained in pre-hospital and transport medicine.

They care for severely injured people who need emergency treatment at the scene of the accident. They also look after seriously ill people who need to be moved between hospitals.

**CareFlight doctors and nurses care for over 5,000 patients every year.**

## About CareFlight

For more information go to [www.careflight.org](http://www.careflight.org)

[www.careflight.org](http://www.careflight.org)



Come and join the conversation

IN YOUR CAPITAL CITY

GPO Box 9829

All correspondence to:

4 Barden Street, Northmead, NSW 2152

**CareFlight Headquarters**

**Online** [www.careflight.org](http://www.careflight.org)

**Mail** CareFlight, GPO Box 9829, In Your Capital City

**Phone** 1800 655 876

**Here's how to donate:**

**DONATE NOW**

# CareFlight

The next *life* we save could be yours



## King Air B200 Aircraft Information Card